

### DIAGRAMMA PRESTAZIONI

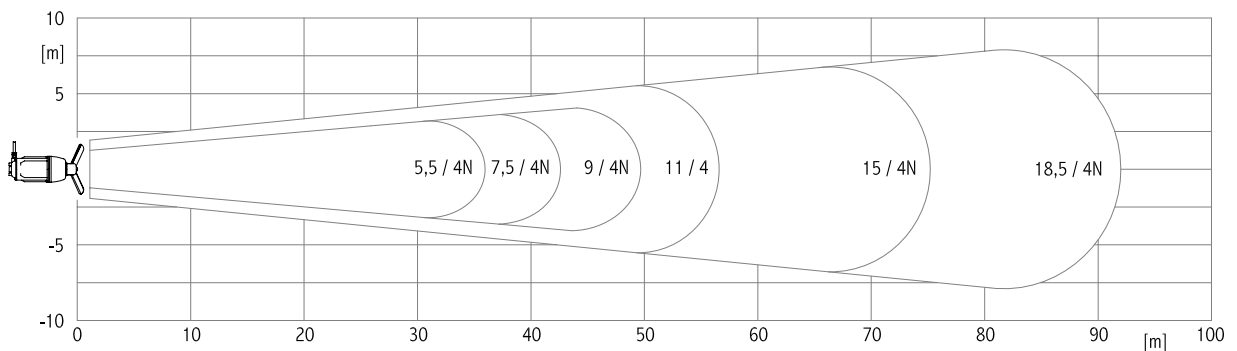
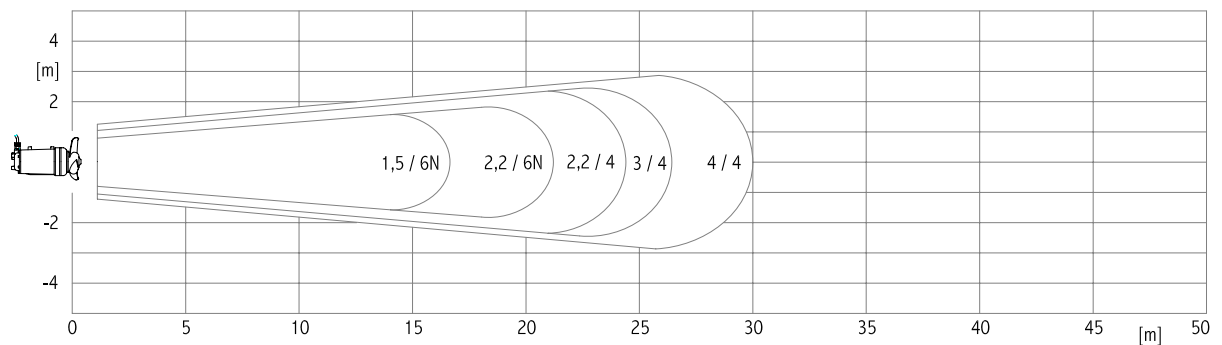
Estensione flusso per  $v = 0.3$  m/s in acqua pulita

### PERFORMANCE DIAGRAM

Flow extension for  $v = 0.3$  m/s in clean water

### DIAGRAMME PERFORMANCE

Extension du flux pour  $v = 0.3$  m/s en eau propre



#### SCelta DEL MISCELATORE

La potenza del miscelatore viene scelta in rapporto al volume della vasca ed al tipo di liquame da trattare:

- reflui civili:  $25 \div 40$  W/m<sup>3</sup>
- liquami contenenti elevate quantità di solidi:  $50 \div 80$  W/m<sup>3</sup>
- liquami contenenti elevate quantità di sabbia:  $100 \div 200$  W/m<sup>3</sup>

#### CHOICE OF MIXER

Mixer power must be chosen in proportion to the volume of the tank and the type of sewage to be treated:

- urban waste water:  $25 \div 40$  W/m<sup>3</sup>
- sewage containing high levels of solids:  $50 \div 80$  W/m<sup>3</sup>
- sewage containing high levels of sand:  $100 \div 200$  W/m<sup>3</sup>

#### CHOIX DE MÉLANGEUR

La puissance de mélangeur doit être choisie en rapport au volume de la fosse et le type de lisier à traiter:

- urbaines résiduaires eaux:  $25 \div 40$  W/m<sup>3</sup>
- lisier contenant élevés quantité des solides:  $50 \div 80$  W/m<sup>3</sup>
- lisier contenant élevés quantité du sable:  $100 \div 200$  W/m<sup>3</sup>

#### CARATTERISTICHE STANDARD

Motori elettrici asincroni trifasi con rotore a gabbia di scoiattolo.  
N°3 sonde termiche inserite nell'avvolgimento statorico.  
In caso di temperatura superiore a 132°C le sonde interrompono l'alimentazione.  
Grado di protezione "IP 68".  
Isolamento classe "F".  
Max profondità immersione 20 m.  
Max contenuto sostanze solide in sospensione 12%.  
Cavo sommergibile in neoprene H07-RN-F.  
pH liquido 5÷12  
Max temperatura del liquido pompato 40° C.  
Servizio continuo.

#### STANDARD FEATURES

Asynchronous three-phase electric motors with squirrel cage rotor.  
N.3 thermic probes installed in the stator winding.  
In case the temperature exceeds 132°C to cut out power.  
Protection "IP 68".  
"F" class insulation.  
Max submergence depth: 20 m.  
Max solid content in the liquid: 12%.  
Submersible H07-RN-F neoprene cable.  
Fluid pH 5 - 12.  
Max temperature of pumped fluid: 40°C.  
Continuous service.

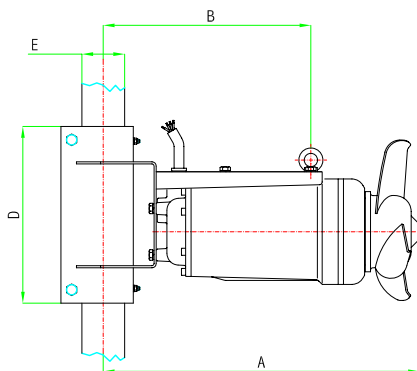
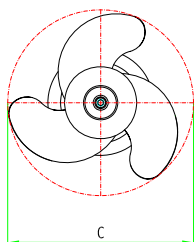
#### CARACTERISTIQUES STANDARD

Moteurs électriques asynchrones triphasé, rotor a cage d'ecureuil.  
N°3 sondes thermiques incorporées dans l'enroulement du stator.  
En cas de surchauffe supérieur à 132°C les sondes coupent l'alimentation.  
Degré de protection "IP 68".  
Isolement classe "F".  
Max profondeur d'immersion 20 m.  
Max contenu de substance solides en suspension 12%.  
Max pH du liquid à relever 5÷12.  
Cable submersible en neoprene H07-RN-F.  
Max temperature du liquide pompe 40° C.  
Service continu.

CARATTERISTICHE MOTORI TRIFASI - 50Hz - ALIMENTAZIONE 400 V ± 10%  
50 Hz - THREE-PHASE- MOTOR FEATURES - VOLTAGE RATING 400 V ± 10%  
CARACTERISTIQUES DES MOTEURS TRIPHASES - 50Hz - ALIMENTATION 400 V ± 10 %

CARATTERISTICHE MISCELATORE  
CHARACTERISTIC MIXER  
CARACTERISTIQUES MELANGEUR

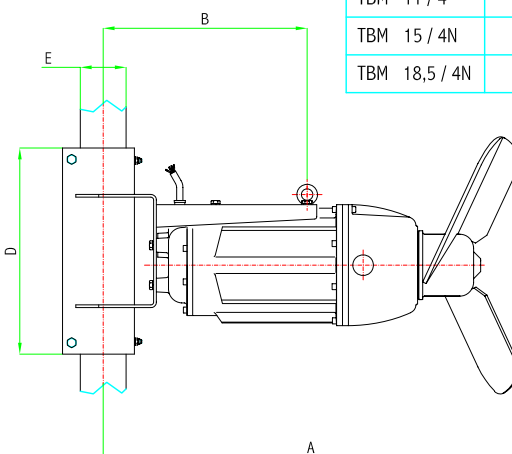
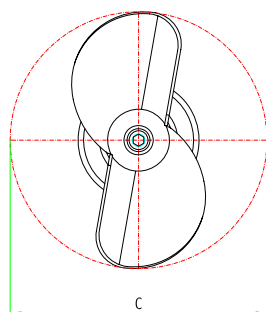
TIPO TYPE TYPE	POTENZA MOTORE MOTOR RATING PUISSANCE MOTEUR [kW]	AVVOLGIMENTI WINDINGS BOBINAGE [V]	ASSORBIMENTO ABSORPTION INTENSITE' [A (400V)]	CAVO ALIMENTAZIONE		FEEDING CABLE	CABLE D'ALIMENTATION	AVVIAMENTO		N° pale Blades N. Pales N.	Giri/min RPM T/min	Portata Capacity Debit [m³/h]	Spinta assiale Axial force Poussée axiale [N]
				n° cavi n° cables n° cables	n° conduttori cavo x sezione n° of wires x size n° conducteurs cable x section	[mm²]	lunghezza cavo cable length longueur cable [m]	diretto direct direct	Δ				
TBM 1,5 / 6N	1,5	230-400	4,2	1	9 x 1.5	8	8	Δ	3	3	925	585	191
TBM 2,2 / 6N	2,2		5,9					Δ			940	833	283
TBM 2,2 / 4	2,2		5,3					Δ			323	1275	404
TBM 3 / 4	3		6,8					Δ			323	1462	498
TBM 4 / 4	4	400-690	9,1	1	9 x 2.5	8	8	Δ Δ	2	2	320	2000	742
TBM 5,5 / 4N	5,5		12,5					Δ Δ			326	2162	800
TBM 7,5 / 4N	7,5		15,8					Δ Δ			328	2821	1131
TBM 9 / 4N	9		19		Δ Δ			328			3013	1265	
TBM 11 / 4	11		23,5		Δ Δ			351			3286	1475	
TBM 15 / 4N	15		30		Δ Δ			351			5489	2859	
TBM 18,5 / 4N	18,5	36	Δ Δ	354	6702	3725							



TBM 1,5 / 6N  
TBM 2,2 / 6N

TIPO TYPE TYPE	Motore Motor Moteur [kW]	DIMENSIONI INGOMBRO OVERALL DIMENSIONS DIMENSIONS D'ENCOMBREMMENT [mm]					Peso Weight Poids [kg]
		A	B	C	D	E	
TBM 1,5 / 6N	1,5	595	395	297	330	80x80	54
TBM 2,2 / 6N	2,2			347			57
TBM 2,2 / 4	2,2	820	445	445	450	100x100	75
TBM 3 / 4	3	830		460			78
TBM 4 / 4	4	840		515			81
TBM 5,5 / 4N	5,5	889	445	535	550	100x100	109
TBM 7,5 / 4N	7,5	903		585			115
TBM 9 / 4N	9	914		595			123
TBM 11 / 4	11	1035		600			183
TBM 15 / 4N	15	1030	505	720	550	100x100	193
TBM 18,5 / 4N	18,5	1045		780			203

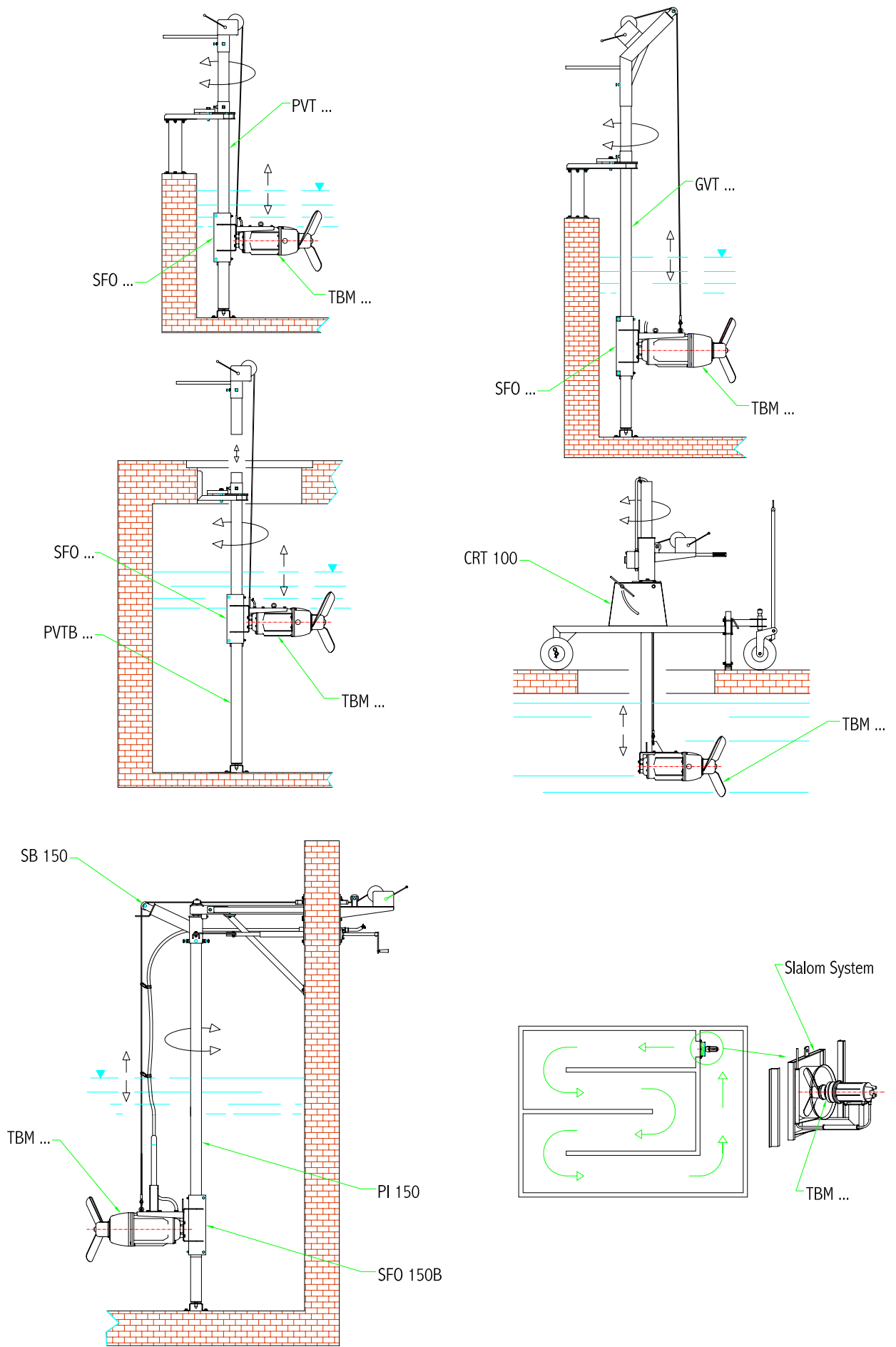
TBM 2,2 / 4      TBM 9 / 4N  
TBM 3 / 4      TBM 11 / 4  
TBM 4 / 4      TBM 15 / 4N  
TBM 5,5 / 4N    TBM 18,5 / 4N  
TBM 7,5 / 4N

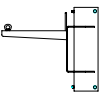
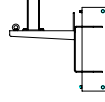
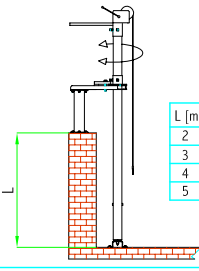
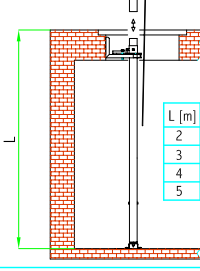
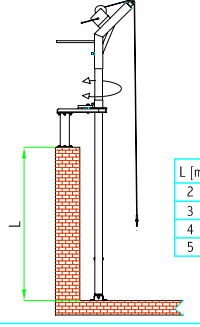

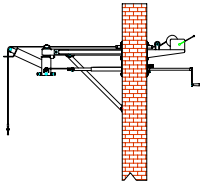
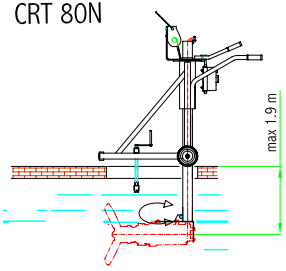


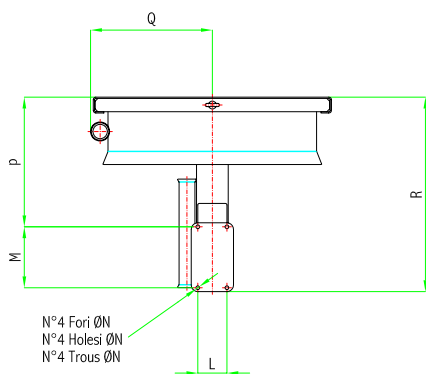
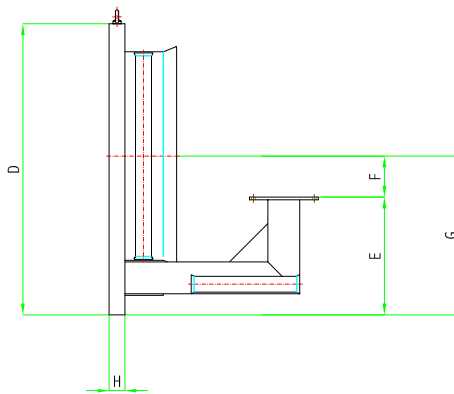
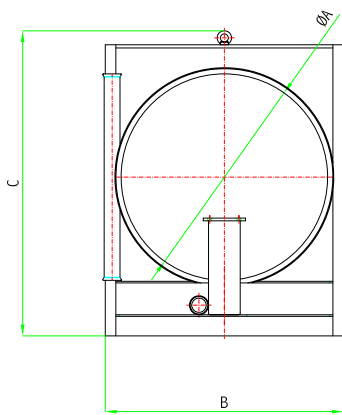
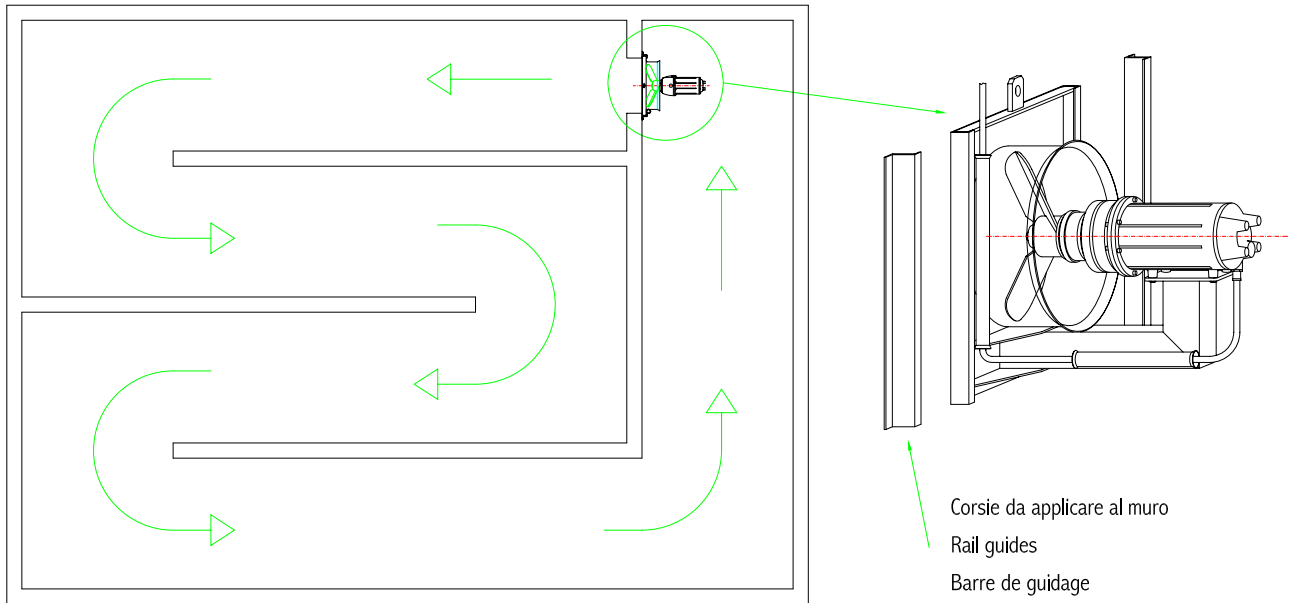
INSTALLAZIONI POSSIBILI

POSSIBLE INSTALLATIONS

VERSIONS POSSIBLES



		ACCESSORI		ACCESSOIRES		
		Attacco palo Motor bracket Console du moteur	Attacco palo per biogas Biogas motor bracket Console du moteur pour biogas	Paranco con verricello e tubo guida Hoist winch and rail pipe Trebil poulie et barre de guidage		
TIPO		SFO	SFO 150B	PVT	PVTB	GVT
TYPE						
TYPE				L [m] 2 PVT../2 3 PVT../3 4 PVT../4 5 PVT../5	L [m] 2 PVTB../2 3 PVTB../3 4 PVTB../4 5 PVTB../5	L [m] 2 GVT../2 3 GVT../3 4 GVT../4 5 GVT../5
TBM 1,5 / 6N	SFO 80	.....	.....	PVT 80 / ..	PVTB 80 / ..	GVT 80 / ..
TBM 2,2 / 6N						
TBM 2,2 / 4						
TBM 3 / 4						
TBM 4 / 4						
TBM 5,5 / 4N	SFO 100	.....	.....	PVT 100 / ..	PVTB 100 / ..	GVT 100 / ..
TBM 7,5 / 4N						
TBM 9 / 4N						
TBM 11 / 4	SFO 150	SFO 150B	.....	PVT 150 / ..	PVTB 150 / ..	GVT 150 / ..
TBM 15 / 4N						
TBM 18,5 / 4N						
TIPO		Tubo guida per staffa biogas Rail pipe for biogas bracket Rail tube pour console biogas	Staffa per biogas Biogas bracket Console pour biogas	Carrello per pozzetti Trolley Chariot		
TYPE		PI 150 	SB 150 	CRT 80N 		
TYPE		6,0 m		max 1,9 m		
TBM 1,5 / 6N	.....	.....	.....	.....	.....	.....
TBM 2,2 / 6N						
TBM 2,2 / 4						
TBM 3 / 4						
TBM 4 / 4						
TBM 5,5 / 4N	PI 150	.....	.....	.....	.....	.....
TBM 7,5 / 4N						
TBM 9 / 4N						
TBM 11 / 4	PI 150	SB 150	.....	.....	.....	.....
TBM 15 / 4N						
TBM 18,5 / 4N						



N°4 Fori ØN  
 N°4 Holes ØN  
 N°4 Trous ØN

Disponibile Zincata a caldo o in Acciaio Inox  
 In hot dipped galvanized steel or stainless steel  
 En acier galvanisé ou acier inox

	DIMENSIONI INGOMBRO [mm]			OVERALL DIMENSIONS [mm]					DIMENSIONS D'ENCOMBREMENT [mm]						Peso Weight Poids [kg]
Per For Pour	ØA	B	C	D	E	F	G	H	L	M	ØN	P	Q	R	
TBM 5,5/4N	555	800	953	900	350	130	480	60	95	200	12	505	400	725	77
TBM 7,5/4N	620														80
TBM 9/4N		900	1153	1100	475	155	630		110	230	14	490	470	735	89
TBM 11/4	94														
TBM 15/4N	740	900	1153	1100	475	155	630	110	230	14	490	470	735	94	
TBM 18,5/4N	800													98	

