

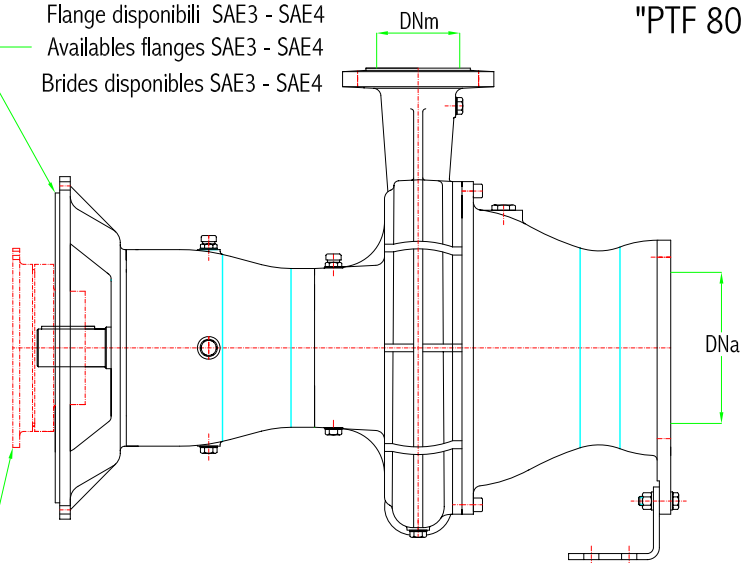
## "PTO 80K"

POMPE ACCOPPIABILI CON GIUNTO ELASTICO  
A MOTORI ELETTRICI E DIESEL

PUMPS FOR DIESEL ENGINES AND ELECTRIC  
MOTORS CONNECTED BY FLEXIBLE COUPLING

POMPES POUR MOTEURS ELECTRIQUES OU DIESEL  
A ACCOULER AVEC JOINT ELASTIQUE

Flange disponibili SAE3 - SAE4  
Disponibles flanges SAE3 - SAE4  
Brides disponibles SAE3 - SAE4



## "PTF 80K"

Con flangia  
With flange SAE3 - "PTF3 - 80K"  
Avec bride

Con flangia  
With flange SAE4 - "PTF4 - 80K"  
Avec bride

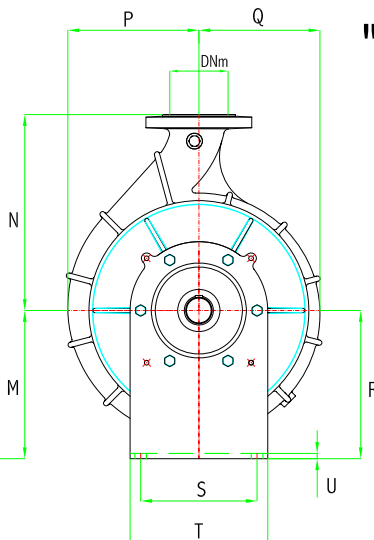
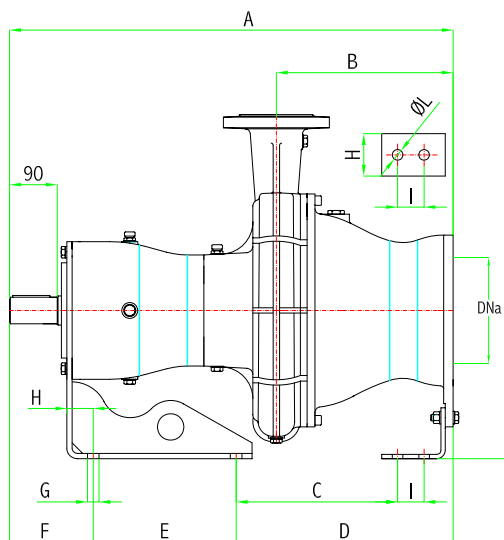
POMPE DIRETTAMENTE FLANGIABILI AL VOLANO  
DEI MOTORI DIESEL DOTATI DI CAMPANA  
D'ATTACCO A NORMATIVA "SAE"

PUMPS DIRECTLY FLANGED TO THE FLYWHEELS  
OF DIESEL ENGINE WITH STANDARD "SAE" HOUSING

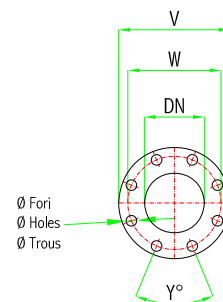
POMPES A BRIDER DIRECTEMENT SUR LES  
VOLANTS DES MOTEURS DIESEL AVEC CLOCHE  
D'ACCOUPLMENT "SAE"

Giunto elastico fornibile a richiesta specificando la grandezza del volano  
Flexible coupling supplied on demand. Flywheel size must be specified  
Joint elastique disponible sur demande. Dimension du volant à préciser

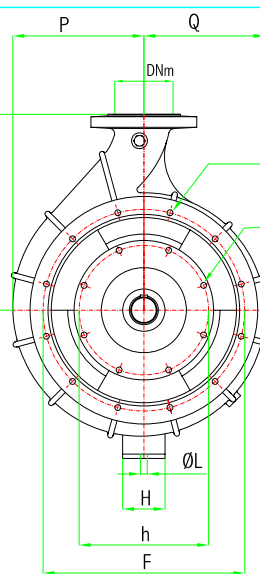
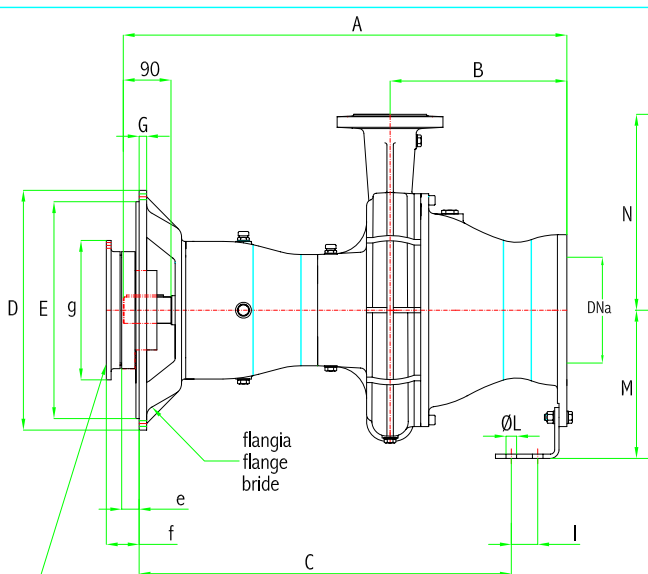




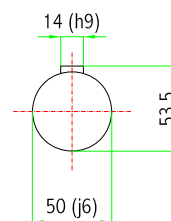
"PTO 80K"



Flange	Flanges			Brides	
	DN	V	W	Y°	Ø Fori n°Fori
80	200	160	45°	18	8
150	285	240	45°	22	8



n° 12 fori Ø 11.5  
n° 12 holes Ø 11.5  
n° 12 trous Ø 11.5  
fori holes trous



Giunto elastico - Flexible coupling - Joint elastique

Grandezza volano Flywheel size Grandeur du volant	Dimensioni -		Dimensions -		Dimensions		Codice* Code* Code*
	e	f	g	fori - holes - trous		h	
				n°	Ø		
[mm]							
7 1/2"	0	30.2	241.3	8	9	222.2	G7
8"	32.9	61.9	263.5	6	11	244.5	G8
10"	24.9	53.9	314.3	8	11	295.2	G10
11 1/2"	10.7	39.7	352.4	8	11	352.4	G11

\* = Denominazione del giunto da citare alla richiesta  
\* = Code flexible coupling to specify when ordering  
\* = Code de l'accouplement elastique à préciser à la commande

"PTF 80K"

DIMENSIONI INGOMBRO IN [mm]- OVERALL DIMENSIONS [mm] - DIMENSIONS D'ENCOMBREMENT [mm]

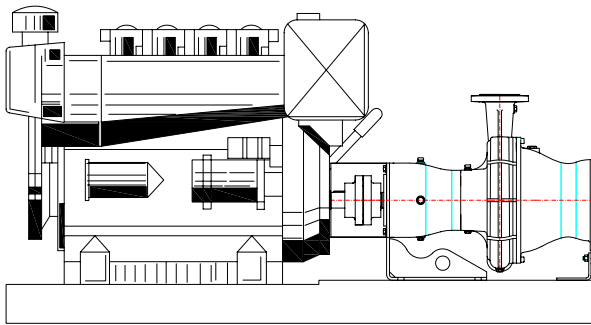
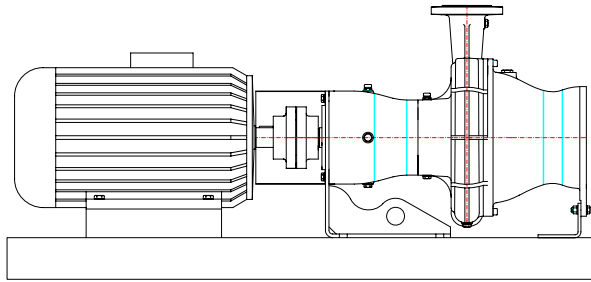
POMPA TIPO PUMP TYPE POMPE TYPE	Aspirazione x Mandata Inlet x Outlet Aspiration x Refoulement DNa x DNm	Flangiatura Flange Bride	A	B	C	D	E	F	G	H	I	L	M	N	P	Q	R	S	T	U
			PTO 80K		-			305	410	270	158	22								280
PTF3 - 80K	150 x 80	SAE 3	838	334	703	429	409.6	428.6		50	50	13	280	370	247	228				
PTF4 - 80K		SAE 4				406	361.95	381	14											

INSTALLAZIONE

INSTALLATION

INSTALLATION

## "PTO 80K"



## "PTF 80K"

